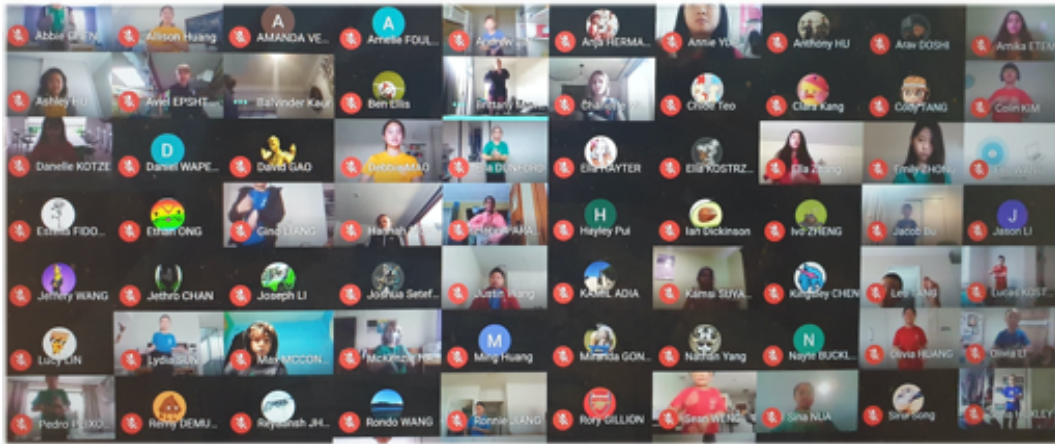


# Guidelines to School At Alert Level 2

*Matauranga ō te Ngakau - Education with a Heart*



**Pigeon Mountain School**  
Education with a Heart



## Welcome Back to School at Alert Level 2!

In preparation for a return to school at Alert Level 2, we would like to share the procedures we developed during our previous spell in Alert Level 2.

These procedures worked very effectively earlier in the year, and we saw incredible growth in many students who were able to farewell parents at the gate, and bring themselves into school - many of these children continued this habit, putting responsibility into action, and showing amazing resilience at the same time!



Our Distance Learning Programme, which has operated so successfully again during the latest lockdown period, will close its virtual doors at the end of this week. Our teachers will continue to reflect on their experiences as teachers of distance learning and bring their successes to the physical classroom! Thank you to our wonderful families for supporting your children's online learning.

### Ensuring a SAFE return to school at Alert Level 2



To keep our staff and students safe, remain **OUTSIDE** the school gates at the start and end of the day.



**NO** adults other than school staff are allowed in classrooms.



**ANYONE** entering the school site for any reason **MUST** register using the school contact register or COVID Tracer App.



Try to keep your communication with school as digital and contact-free as possible.

**A few days before returning to school;**

-Talk to your child about the importance of coming into school alone or with a friend - they are helping keep their friends and teachers safe by reducing the number of other adults onsite.

**At the start of each school day;**

-You are helping our children and teachers stay SAFE if you stay outside the school gate once you have said goodbye to your child.  
 -If for some reason you are NOT able to stay outside the school, remember that only school staff are allowed in classrooms under Alert Level 2. **You will be required to register your presence on site.**  
 -Please email any important messages to teachers- parents are not allowed in the classroom spaces.  
 -If your child is coming to school alone, please remember that gates are not opened until 8.30am.

**In learning spaces;**

-Although schools are controlled **SAFE** places where physical distancing is **NOT** required, **your child can sensibly wear a mask if you wish.**  
 -Large events like assemblies will NOT take place. We have chosen to use online tools to celebrate PB4L and Learning Assemblies until we return to Alert Level 1.  
 -The LIFE EDUCATION CARAVAN will proceed with safety measures in place for students and the visiting teacher who delivers the programmes.  
 -Inter-school events will not take place under Alert Level 2.  
 -Weekly classes and tutoring will not resume until Alert Level 1 (Piano, French Classes, CNSST etc.)

**At morning tea and lunchtime;**

-We do not anticipate a food/canteen service operating- we will advise any changes in this service.  
 -Water fountains have been disabled. Please ensure your child has a named water bottle.  
 -Public access into and through the site is not allowed.

**At the end of the school day;**

-You are helping our children and teachers stay SAFE if you stay outside the school gate waiting for your child. Talk to your child about your designated pick-up place and have a plan for JUST IN CASE you and your child become separated. (This should involve your child coming to the school office!)  
 -Remember that only school staff are allowed in classrooms under Alert Level 2.

**HELPING TO DO YOUR PART DURING THIS ALERT LEVEL**

- Children who are unwell or showing symptoms of cold should not be at school. You will be contacted to collect your child if they are displaying symptoms such as fever, runny nose, coughing, sneezing. **Help us by keeping sick children at home.**
- Inform school if you have to make a visit. You MUST report into reception first. The Loloma Dr, Marina pathway and Wells Rd gates will be locked between 9.00am and 2.45pm. Our reception will also be locked and we will be able to allow one person at a time into this space.
- Please contact school if you have any questions;

**Tel- 09 534 9765**

**eMail- [general@pmps.school.nz](mailto:general@pmps.school.nz)**